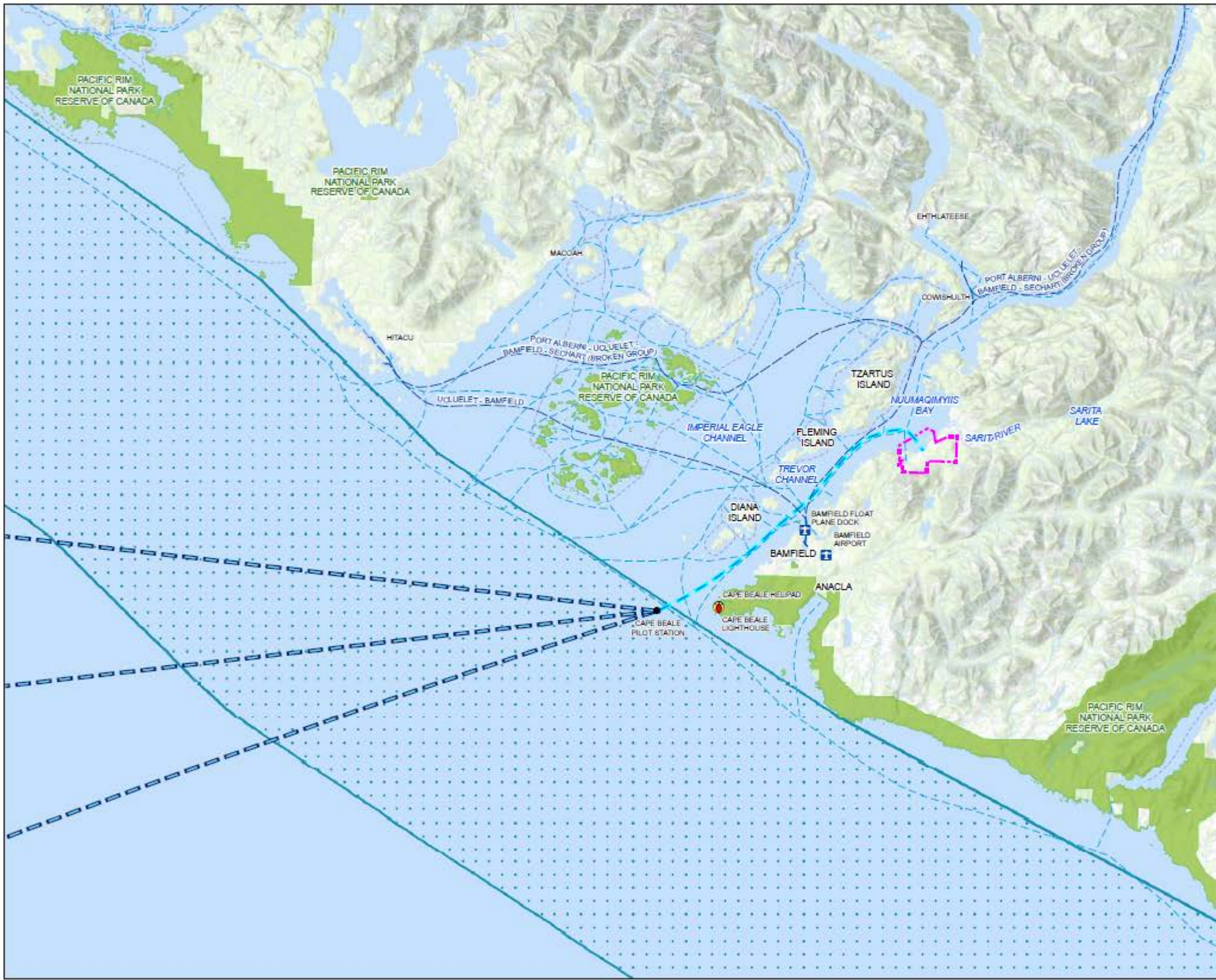


Expected Shipping Route



Legend

-  Kwispa LNG Area
-  Airport
-  Helipad
-  Lighthouse
-  Pilot Station
-  Kwispa Shipping Route
-  Anticipated Shipping Routes Past Pilot Station¹
-  Coastal Ferry Route
-  Recreational Boating Route
-  Sea Kayaking Route
-  Canadian Exclusive Economic Zone (EEZ)
-  Canada's Territorial Sea²
-  International Shipping Lanes (only shown between Vancouver, Seattle, and J-Buoy)
-  National Park

Notes

1. All mapped features are approximate and should be used for discussion purposes only.
2. This map is not intended to be a "stand-alone" document, but a visual aid of the information contained within the referenced Report. It is intended to be used in conjunction with the scope of services and limitations described therein.
3. It is expected that the LNG carriers departing Kwispa LNG will head due west towards LNG customers in Asia. It is not anticipated that LNG carriers would deviate from the most direct route and sail northwest along the coastline of Vancouver Island. As there are no defined navigation corridors in the open ocean beyond the Cape Beale Pilot Station, the specific course will be determined by the ship's captain in accordance with Canadian and International regulations and guidelines (e.g., IMO A.993(21)).
4. The territorial sea of Canada extends 12 nautical miles from its inner limit (or baseline) as defined in the Oceans Act.

Sources

- Coastal Ferry, Recreational Boating and Sea Kayaking Routes: BCMA
- Pilot Station: BC Coast Pilots
- International Shipping Lanes: NOAA
- National Park, EEZ: Government of Canada
- Territorial Sea: Flanders Marine Institute, 2018
- Basemap: ESRI World Topo Base

